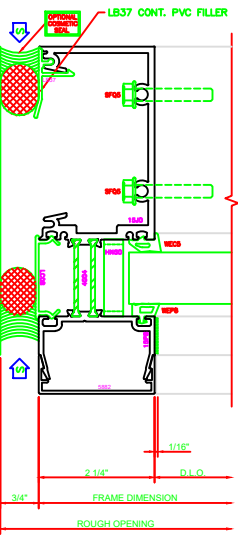
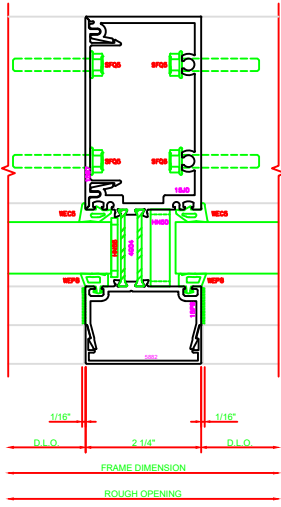


**ERASE NOTE**  
 NOTE: WHEN USING TUBULAR HORIZONTAL COVER THE 1/4" GAP SHOWN IS USED. WHEN USING THE 2-PIECE HORIZONTAL COVER/PRESSURE PLATE, THE COVER WILL HAVE A 3/8" GAP AND PRESSURE PLATE WILL HAVE 3/8" GAP ON EACH END. ADJUST ACCORDINGLY.

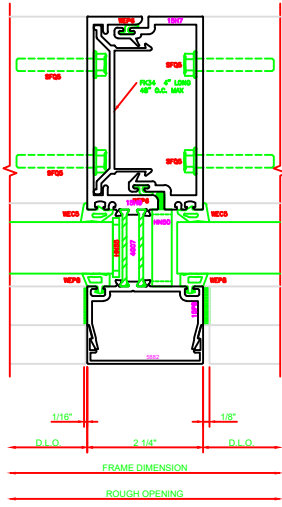
**412 I.G. JAMB**  
 SERIES: 5500 6"



**614 I.G. VERT.**  
 SERIES: 5500 6"



**615 I.G. EXPANSION VERT.**  
 SERIES: 5500 6"



**ERASE NOTE**  
 NOTE: WHEN USING TUBULAR HORIZONTAL COVER THE 3/8\"/>

**413 I.G. JAMB**  
 SERIES: 5500 6"

